



GULF_{of}ALASKA



NAVY TRAINING ACTIVITIES
DRAFT SUPPLEMENTAL ENVIRONMENTAL IMPACT STATEMENT/
OVERSEAS ENVIRONMENTAL IMPACT STATEMENT (EIS/OEIS)

January/February 2021

*For technical support, please contact
info@goaeis.com or 1-888-576-6302.*



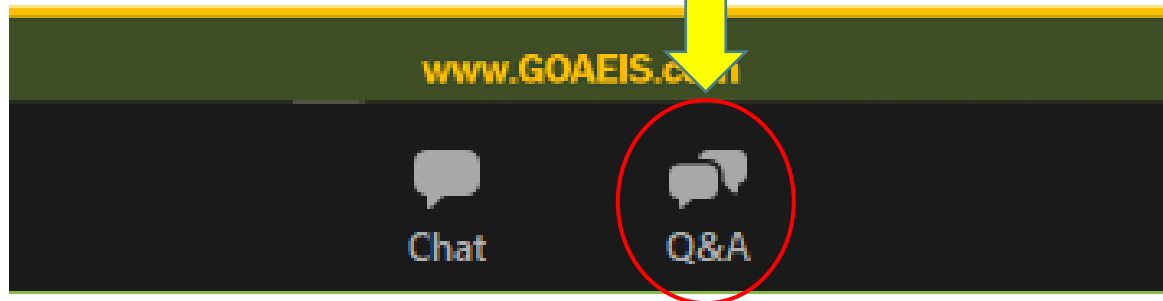
HOW TO ASK A QUESTION

DESKTOP OR MOBILE APPLICATIONS:

➤ ENTER QUESTION INTO Q&A BOX

Telephone:
Press *9 for verbal question

For technical support
info@goaeis.com



➤ QUESTIONS SUBMITTED DURING THE Q&A SESSION ARE NOT PART OF THE PUBLIC RECORD

Please limit your question to one minute so all participants who would like to ask a question have an opportunity.

For technical support, please contact
info@goaeis.com or 1-888-576-6302.

Mr. John Mosher



**GULF OF ALASKA SUPPLEMENTAL EIS/OEIS PROGRAM MANAGER
U.S. PACIFIC FLEET**



AGENDA

➤ **OVERVIEW OF:**

- Importance of realistic training
- Military training in the Gulf of Alaska
- Proposed Action and Alternatives
- Resources areas
- Mitigation, conservation, and environmental stewardship
- Public access

➤ **QUESTION-AND-ANSWER SESSION**



IMPORTANCE OF REALISTIC TRAINING

➤ **TRAIN TO RESPOND TO A WIDE RANGE OF SITUATIONS:**

- Large-scale conflict
- Maritime security
- Humanitarian assistance
- Disaster relief
- Homeland defense
- Anti-piracy operations



➤ **PREPARE FOR DEPLOYMENT**

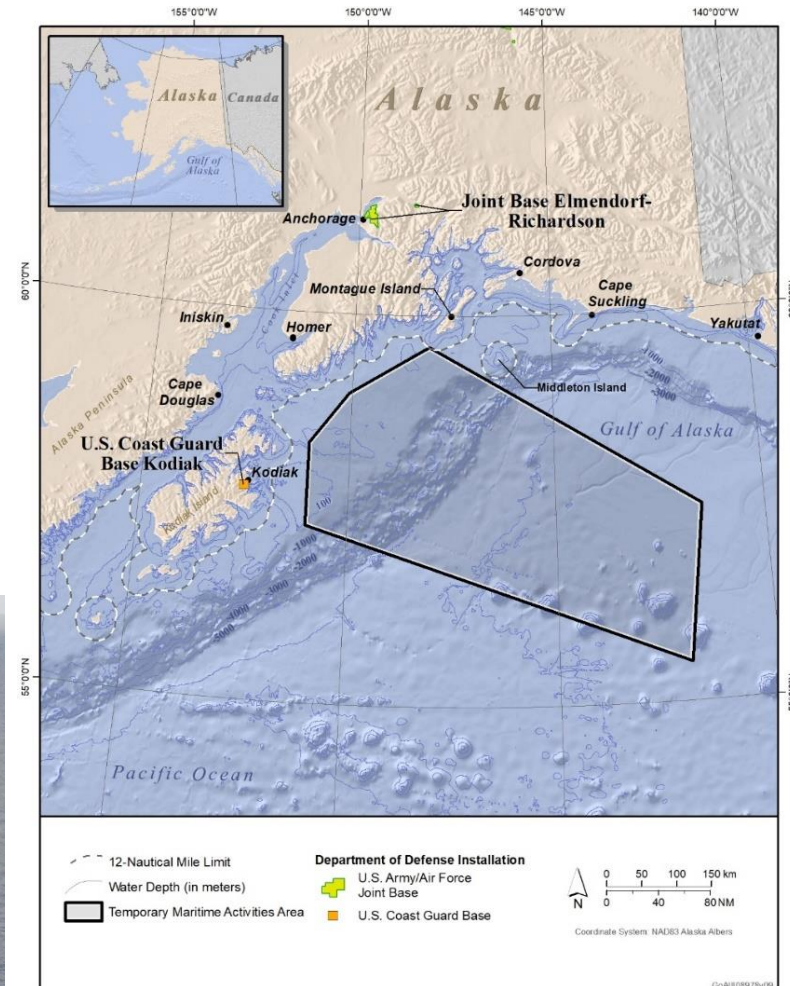


MILITARY TRAINING IN THE GULF OF ALASKA



IDEAL SETTING FOR EFFECTIVE, REALISTIC, AND SAFE TRAINING AT SEA:

- Location
- Oceanographic conditions
- Area of training space
- Beyond 12 nautical miles from the coastline





NORTHERN EDGE JOINT TRAINING EXERCISES

- **MILITARY'S LARGEST JOINT TRAINING EXERCISE IN ALASKA**
- **NAVY PARTICIPATION SINCE 1990**
- **BIENNIAL EXERCISE:**
 - Up to 21 days
 - Every other year in odd years
- **SUPPLEMENTAL EIS/OEIS INCLUDES ANALYSIS OF ONE EXERCISE PER YEAR**





TRAINING WITH SONAR AND WEAPON SYSTEMS

TRAINING USING SONAR

- Sound waves detect and locate submerged objects
- Sonar proficiency is complex and requires consistent training
- Simulators cannot completely replace active training



TRAINING USING WEAPON SYSTEMS

- Prepares for emergencies and national security threats
- Enhances safety
- Improves readiness and equipment reliability



PROPOSED ACTION

Continue periodic training in the Gulf of Alaska
Temporary Maritime Activities Area to
accomplish the Navy mission.





NO ACTION ALTERNATIVE

- **AUTHORIZATION UNDER THE MARINE MAMMAL PROTECTION ACT WOULD NOT BE REISSUED BY NATIONAL MARINE FISHERIES SERVICE**
- **PROPOSED AT-SEA TRAINING ACTIVITIES WOULD NOT OCCUR**
- **PURPOSE OF AND NEED FOR THE PROPOSED ACTION WOULD NOT BE MET**



ALTERNATIVE 1 (PREFERRED ALTERNATIVE)

- **NAVY TRAINING WOULD CONTINUE AT CURRENT LEVELS**
- **CURRENT AND FUTURE TRAINING REQUIREMENTS NECESSARY TO ACHIEVE AND MAINTAIN FLEET READINESS WOULD BE MET**





RESOURCE AREAS

The Navy evaluated each resource area in the 2011 and 2016 impact analyses to determine the need for reanalysis. For most resource areas, results remain unchanged and do not require additional analysis.



RESOURCES REANALYZED:

- Fishes
- Sea turtles
- Marine mammals
- Birds
- Socioeconomic resources and environmental justice



RESOURCES NOT REANALYZED:

- Air quality
- Sediments and water quality
- Marine habitats
- Marine vegetation
- Marine invertebrates
- Cultural resources
- Public health and safety



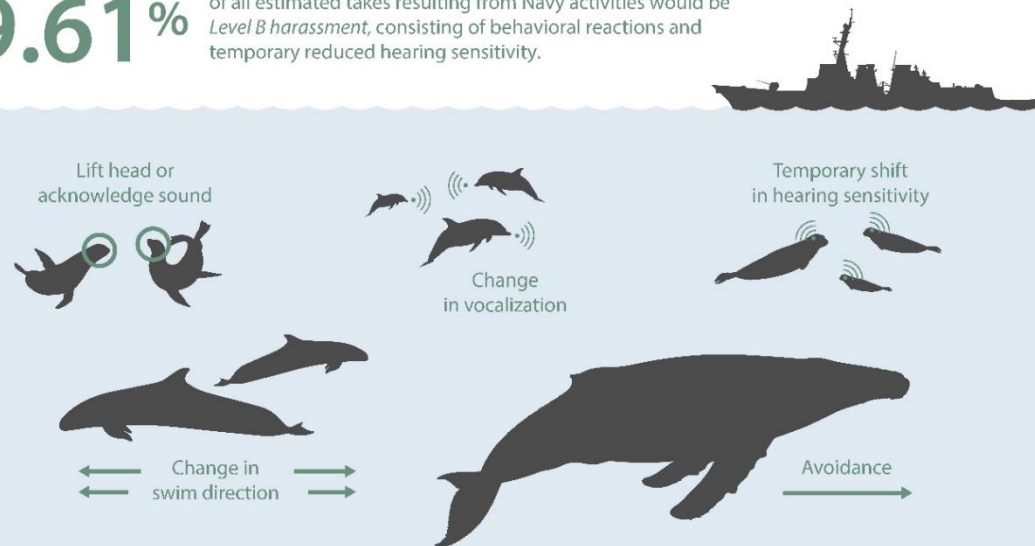
POTENTIAL IMPACTS ON MARINE MAMMALS

Navy Activities and Estimated Marine Mammal Annual Takes

Approximately

99.61%

of all estimated takes resulting from Navy activities would be *Level B harassment*, consisting of behavioral reactions and temporary reduced hearing sensitivity.



Approximately

0.39%

of all estimated takes would be **permanent threshold shifts** (*Level A harassment*). Non-auditory injury and mortality are not expected to occur per the acoustic effects modeling.



Permanent shift of hearing sensitivity (for a portion of an animal's pre-exposure hearing range)

**Illustrations are representative of potential behavioral or physiological responses.*



MITIGATION AND CONSERVATION

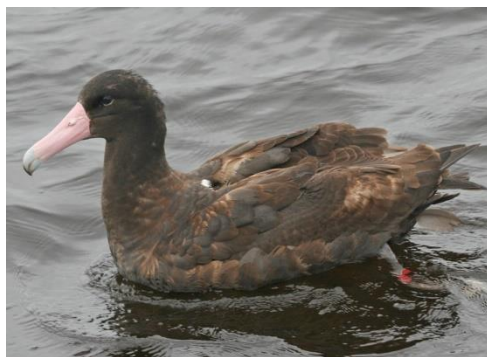
- **OBSERVE AREAS**
- **POST QUALIFIED LOOKOUTS**
- **ESTABLISH MITIGATION ZONES**
- **NAVIGATE SAFELY**
- **IMPLEMENT GEOGRAPHIC AND SEASONAL MITIGATION MEASURES**
- **RESEARCH AND MONITORING EFFORTS**
- **REPORT MONITORING RESULTS**
- **COORDINATE WITH REGULATORY AGENCIES**





ENVIRONMENTAL STEWARDSHIP AT SEA

- **NO DISCHARGE OF PLASTICS AT SEA**
- **ENERGY CONSERVATION AND EFFICIENT TECHNOLOGIES**
- **BALLAST WATER MANAGEMENT TO PREVENT INTRODUCTION OF NON-NATIVE SPECIES**
- **MARINE SPECIES RESEARCH AND MONITORING**





PUBLIC ACCESS AT SEA

The Navy does not restrict fishing vessels, commercial shipping, or aircraft during Northern Edge maritime activities.

- **THE NAVY COORDINATES WITH THE U.S. COAST GUARD AND FEDERAL AVIATION ADMINISTRATION TO ISSUE NOTICES TO MARINERS AND AVIATORS TO MINIMIZE INCONVENIENCES.**





NATIONAL ENVIRONMENTAL POLICY ACT PROCESS

The Navy is committed to meaningful and safe engagement with the public during COVID-19 conditions.



Notice of Intent to Prepare a Supplemental EIS/OEIS
Feb. 10, 2020



Scoping Period
Feb. 10, 2020 – March 11, 2020

Public Release of the Draft Supplemental EIS/OEIS
Dec. 11, 2020



**Draft Supplemental EIS/OEIS
Public Review and Comment Period**
Dec. 11, 2020 – Feb. 16, 2021

Public Release of the Final Supplemental EIS/OEIS
Winter 2022



30-Day Wait Period
Winter 2022

Record of Decision
Spring 2022



Opportunities for public review and comment



PUBLIC REVIEW AND COMMENTS

The Navy welcomes and appreciates substantive public comments on the 2020 Draft Supplemental EIS/OEIS.

➤ **PROJECT WEBSITE: WWW.GOAEIS.COM**

➤ **WRITTEN COMMENTS:**

Naval Facilities Engineering Command Northwest
Attention: GOA Supplemental EIS/OEIS Project Manager
1101 Tautog Circle, Suite 203
Silverdale, WA 98315-1101

To be considered in the development of the Final Supplemental EIS/OEIS, comments must be postmarked or received online by **11:59 p.m. PST Feb. 16, 2021.**



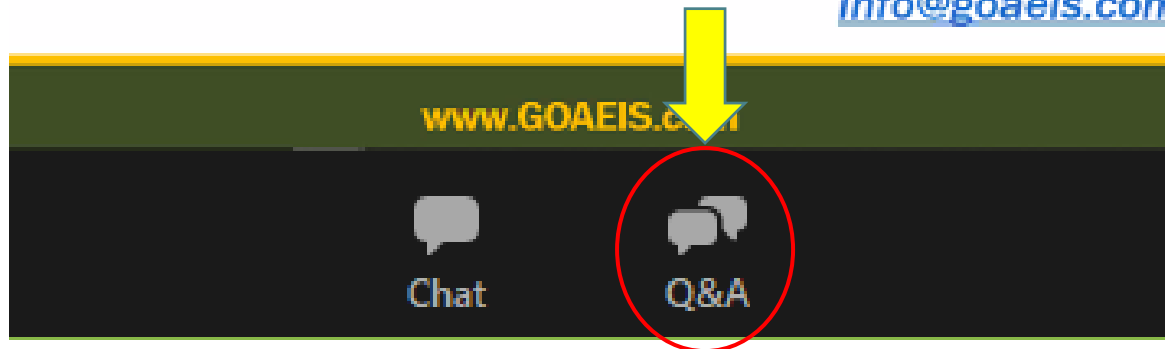
HOW TO ASK A QUESTION

DESKTOP OR MOBILE APPLICATIONS:

➤ ENTER QUESTION INTO Q&A BOX

- Question will be read by moderator

For technical support,
info@goaeis.com



➤ QUESTIONS SUBMITTED DURING THE Q&A SESSION ARE NOT PART OF THE PUBLIC RECORD

*Telephone: Press *9
for verbal question*

- *After moderator prompt, press *6 to unmute Zoom*
- *Make sure your phone is not muted*

Please limit your question to one minute so all participants who would like to ask a question have an opportunity.

For technical support, please contact
info@goaeis.com or 1-888-576-6302.